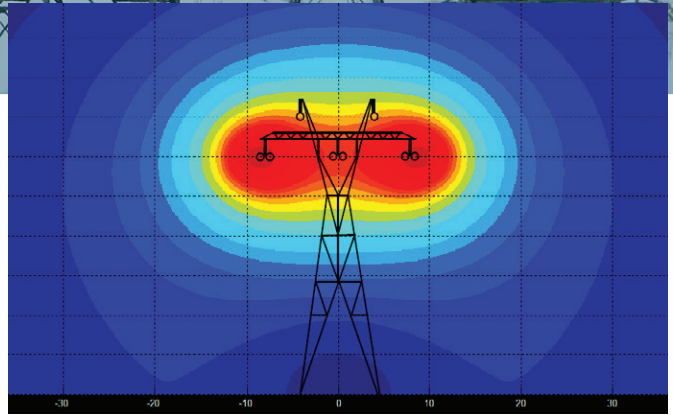


ELECTROMAGNETIC FIELD STUDIES

OUR SOLUTIONS

Electromagnetic field levels are an increasing concern for operators and regulators. These levels are produced by the flow of electrons within a conductive material. The magnitude of these fields is dependent not only on the operating and design parameters of equipment, but also on the surrounding environmental characteristics. There are an increasing number of operators and jurisdictions that require the consideration of EMF levels in the design of infrastructure. EN Engineering offers in-house modeling expertise to evaluate magnetic and electric fields from existing and proposed circuits such as overhead electric lines and underground power cables.



SERVICES

- Soil resistivity measurements
- Site evaluations
- Modeling services by SES CDEGS and Multifields+ modules
- Able to evaluate multiple circuit loadings and complex geometries
- Able to include nearby utilities and assets (i.e. buried pipelines & railroads)
- Graphical and tabular results of electric and magnetic fields
- Evaluation against operator limits or regulatory requirements
- Consulting services to optimize designs as needed
- Professional Engineer (PE) review and seal