

# THE EVOLUTION OF UTILITIES



We are at the convergence of two dramatic needs: the demand for more bandwidth and less electricity usage on the grid. The grid is aging and is facing

## new, unprecedented challenges:



### NATURAL DISASTERS

**4.5 million**  
**CUSTOMERS**

lost power in the 2021 Texas Freeze.

**83%**  
**OF UTILITIES**

expect extreme weather to impact future grid stability.



### ELECTRIC VEHICLES

**23%**  
**OF CARS SOLD**  
by 2025 will be EV's.

**80%**  
**OF CHARGING**  
will happen at home.



### DISTRIBUTED ENERGY RESOURCES

**1,408**  
**SOLAR**  
**INSTALLATIONS**  
per day in the U.S. in 2021.

**387 GW**  
**OF CAPACITY**  
from DERs by 2025.



### RESILIENCY

**\$80B**  
**IN POWER OUTAGES**  
per year.

**70%**  
**TARGETED REDUCTION**  
in outage time due from  
resiliency schemes.

## What are the risks of not modernizing the grid?



Accurate real-time information is crucial for utilities to safely and effectively manage extreme weather events.

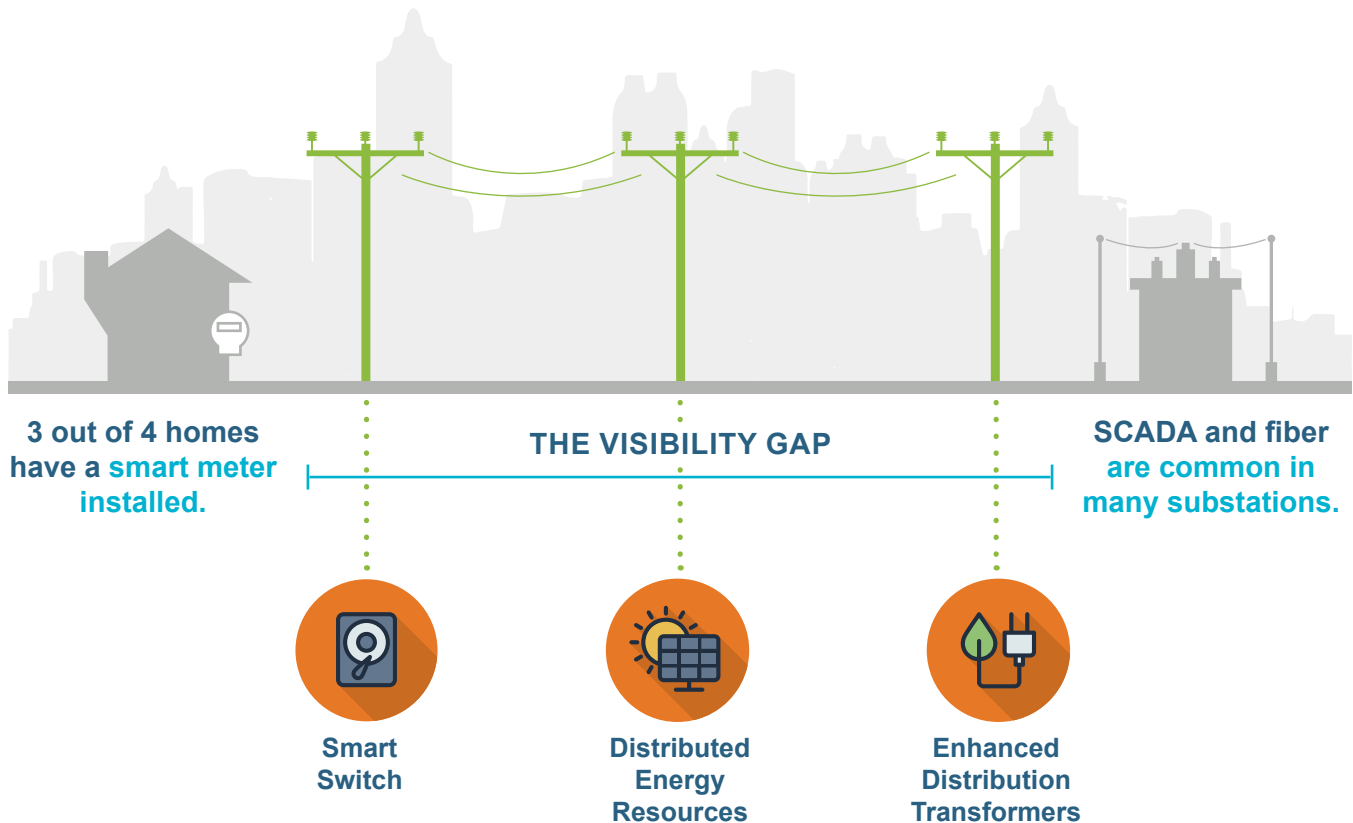


Transformers face an elevated risk of failure due to the overload caused by shifts in residential demand.



Comprehensive visibility is essential throughout the entire grid.

Moreover, a gap in fiber persists between  
**the meter and substation:**



An ideal solution would leverage already deployed grid assets  
**to close the visibility gap.**

What if your **existing** distribution transformers could do more than transform voltage?

**What if they could:**



**Monitor Asset Health**



**Improve Grid Visibility**

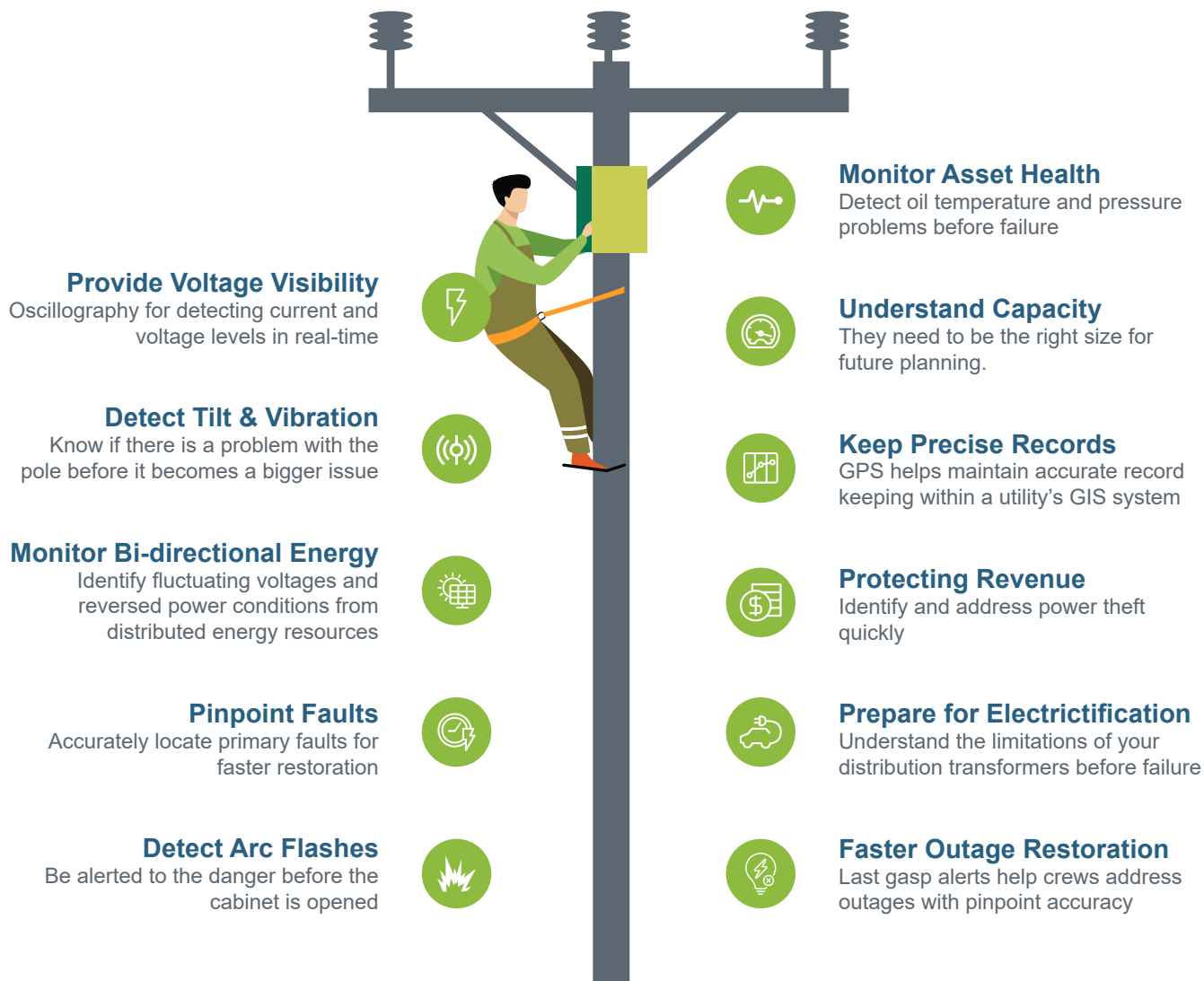


**Predict Future Failures**

# THE EVOLUTION OF UTILITIES



Each of ENTRUST's sectors contributes unique capabilities to enhance efficiency, safety, and overall performance. Together, these sectors create a holistic approach to modernization, leveraging cutting-edge technologies to enhance reliability, efficiency, and safety in the ever-evolving landscape of telecommunications infrastructure.



To learn how ENTRUST can help you modernize your telecommunications grid, contact us at  
(630) 353-4000 or [info@entrustsol.com](mailto:info@entrustsol.com)

#BetterTogether #SmartGridEnabled

SOURCES: [energy.utexas.edu](http://energy.utexas.edu) / [tdworld.com](http://tdworld.com) / [bnef.turtl.com](http://bnef.turtl.com) / [forbes.com](http://forbes.com) / [seia.org](http://seia.org) / [woodmac.com](http://woodmac.com)

[entrustsol.com](http://entrustsol.com)

